



GARDEN CITY

— KANSAS —

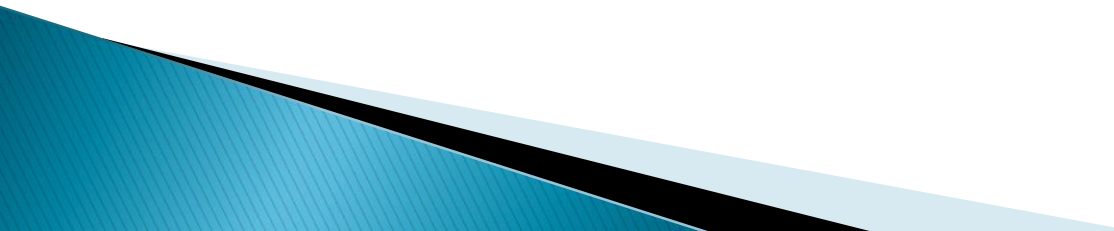
City Manager
Matthew C. Allen

City of GC Overview

- ▶ Commission/Manager Form of Government
- ▶ 5 Commissioners elected at large



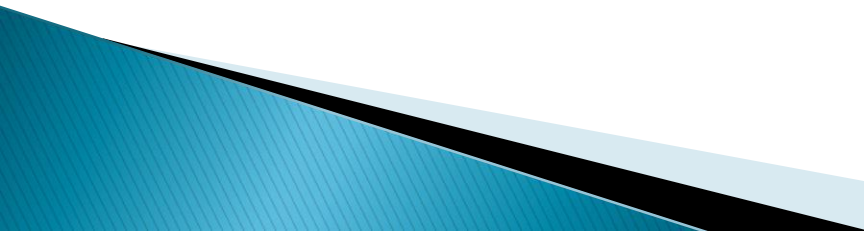
Commission/Manager

- ▶ Adopted form in April 1946
 - ▶ City Manager is appointed by the City Commission
 - ▶ Intended to functionally separate policy from administration
 - ▶ City Commission decides what programs and functions the city government shall provide, as well as responsibilities set forth by Kansas Statutes
- 

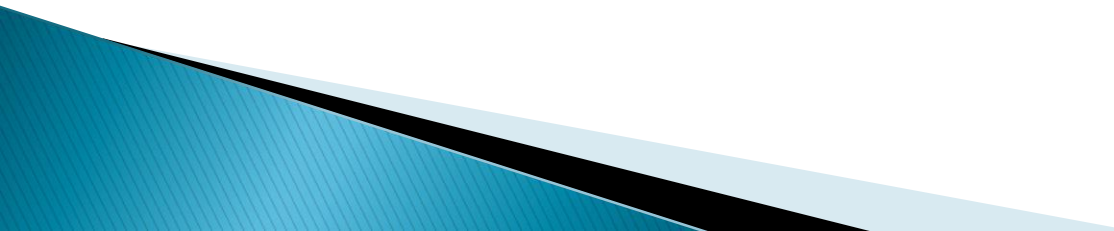
City Commission's Role

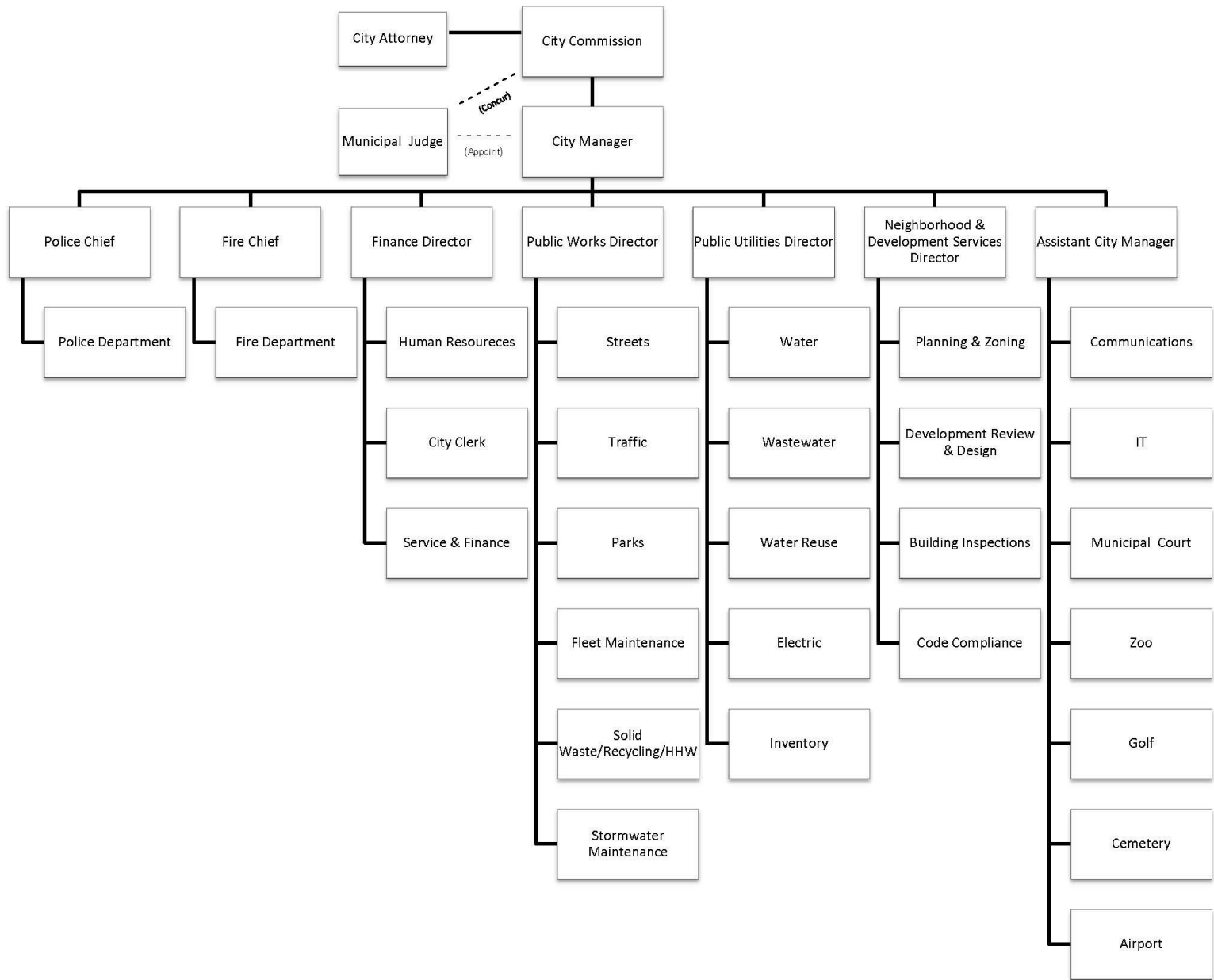
- ▶ City Commission
 - Passes all ordinances and resolutions
 - Adopts the annual budget
 - Provides the necessary positions for officers to govern the city
 - Authorizes salaries for City employees
 - Appoints City Manager

City Manager's Role

- ▶ City Manager
 - Enforces all laws, ordinances and policies
 - Appoints and removes all Dept. heads/staff
 - Runs the day-to-day business operations of the City
 - Introduces agenda items at City Commission meetings
 - Makes recommendations to the Commission
 - Prepares annual budget for Commission's review
 - Performs other duties as necessary
- 

Resources

- ▶ The City of Garden City is comprised of:
 - 22 Departments
 - Approximately 340 Employees
 - ▶ For FY 2019 the Commission approved a Budget of \$117M
 - ▶ Money is used to fund the operational components and programs provided by our departments
- 



Jennifer Cunningham – Assistant City Manager

- ▶ With the City since 2012 and has been the Assistant City Manager since 2015.
- ▶ Previously City Prosecutor/Court Administrator
- ▶ Leads the following departments: Lee Richardson Zoo, Buffalo Dunes Golf Course, Garden City Regional Airport, The Big Pool, Municipal Court, Prosecution and Information Technologies & Communications.



Organizational Values

- ▶ Service
 - ▶ Community
 - ▶ Performance
- 